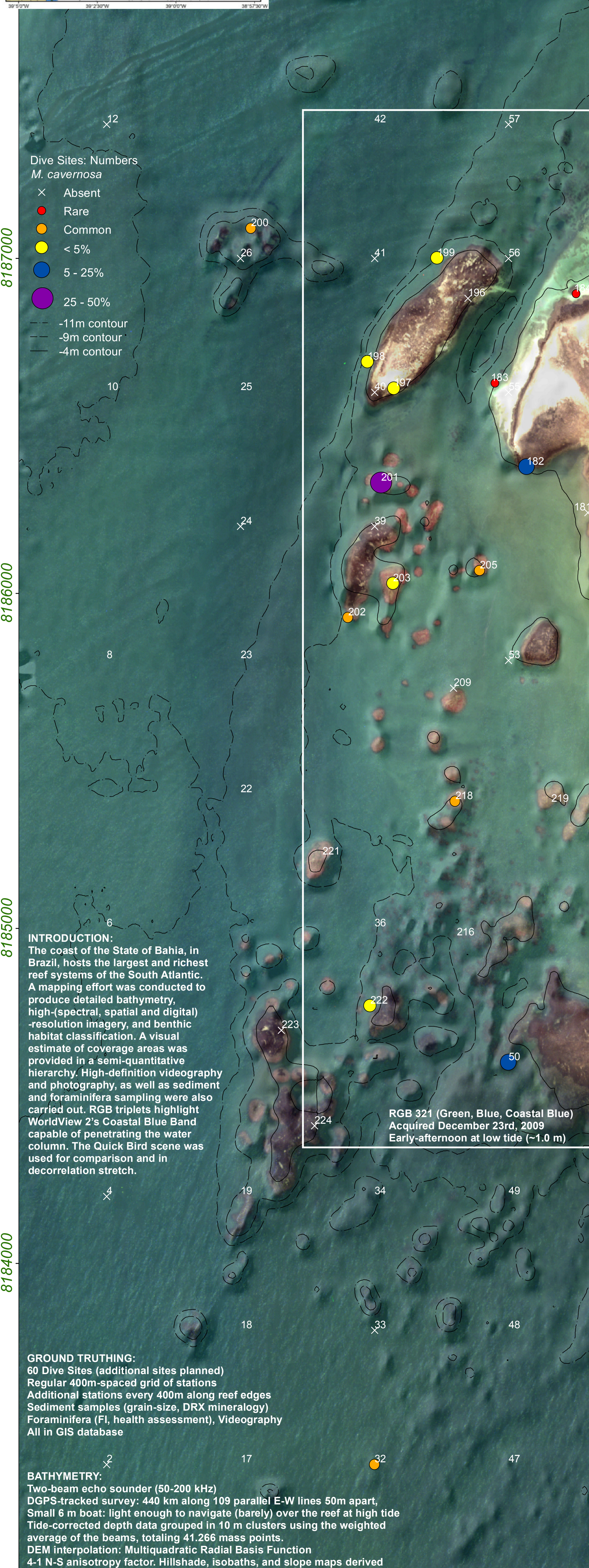
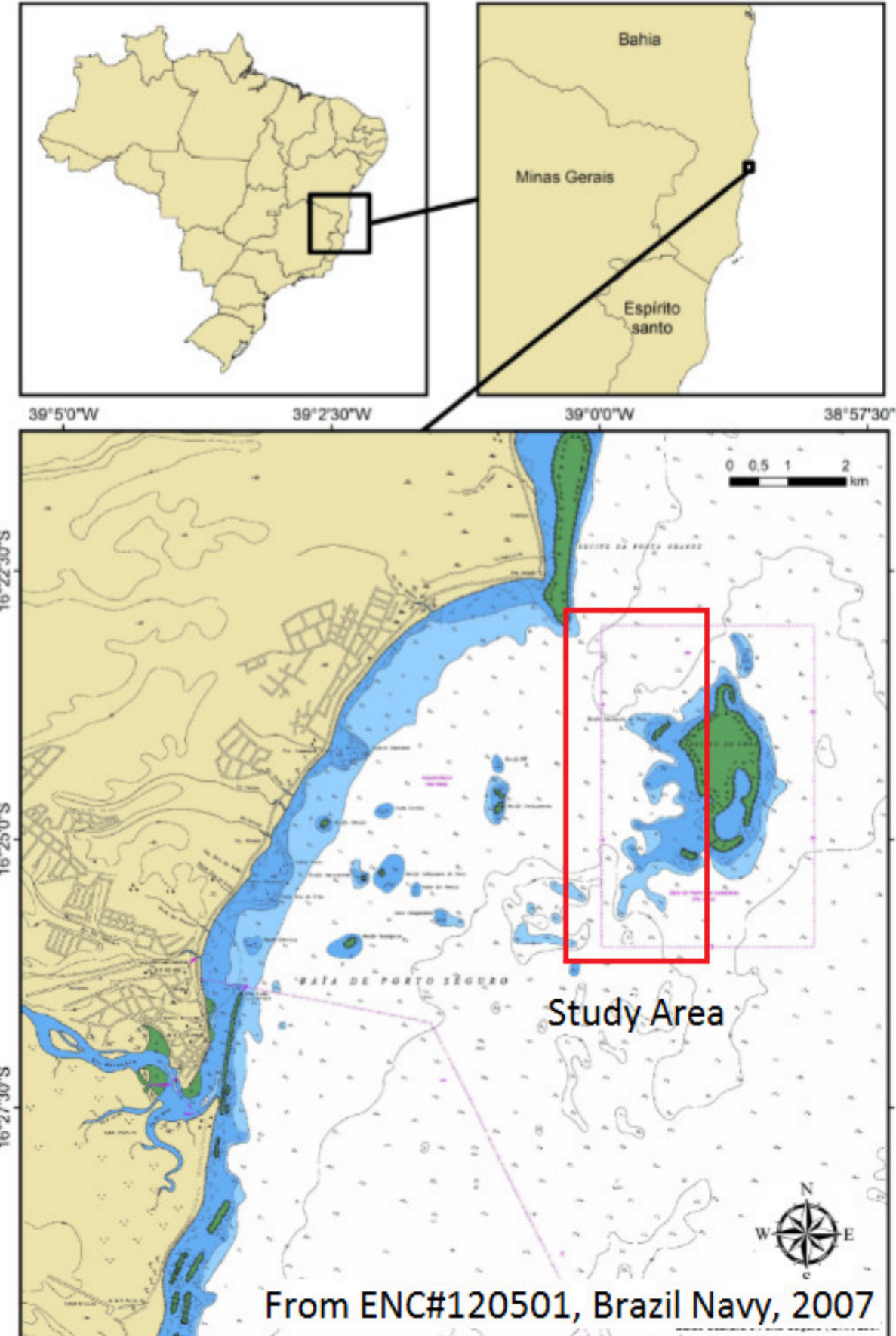


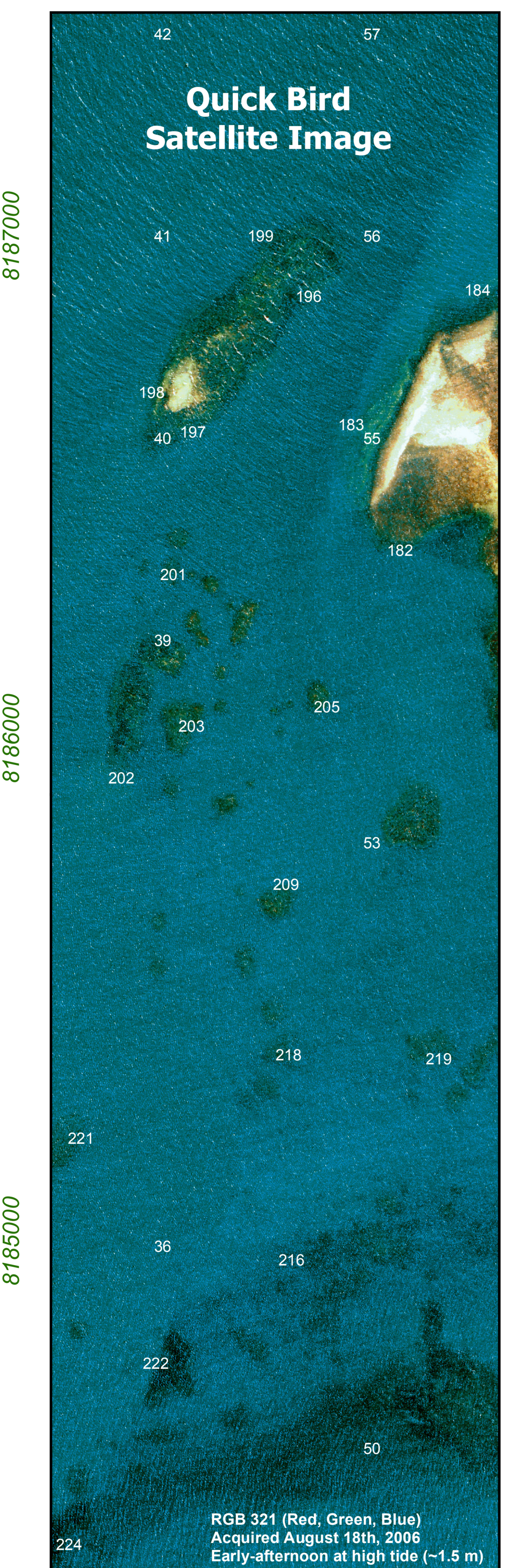
# Benthic Habitat Mapping at Recife de Fora, Brazil: Imagery and GIS

José Carlos S. Seoane<sup>1,2</sup>, Renata Carolina M. Arantes<sup>1</sup>, Clovis B. Castro<sup>2,3</sup>

1 Geology Department  
Federal University of Rio de Janeiro (UFRJ)  
cainho@geologia.ufrj.br  
2 Projeto Coral Vivo  
3 Museu Nacional / UFRJ



- DIVE SITES CLASSIFIED BY HABITAT**
- Hard Bottom (Reef) :**
- Back Reef
    - Tide-exposed Coral and Coralline Algae
    - Coral and Coralline Algae
    - Coral and Octocoral
    - Coralline Algae Reef ; Coral and Octocoral
    - Coral and Coralline Algae
    - Coral and Octocoral
  - Pinnacle
    - Coral, Fire Coral and >25% Macroalgae
    - Octocoral and Coral
    - Macroalgae Dominated (>25%)
    - Zooanthidean
  - Patch Reef
    - Coral and Octocoral
  - Aggregate
    - Macroalgae Dominated (>25%)
- Unconsolidated Sediment :**
- Macroalgae Dominated (>25%)
  - Compacted Mud
  - Mud
  - Mud ; Seagrass
  - Mud ; Dense Seagrass
  - Sand ; Dense Seagrass
  - Sand
  - Sandy Beach
  - Sand Waves



- HABITAT MAP LEGEND**
- Hard Bottom (Reef) :**
- Back Reef
    - Coral and Coralline Algae
    - Coral, Coralline Algae, Octocoral
    - Deeper Coral and Octocoral
  - Patch Reef
    - Coral and Coralline Algae
    - Coral and Octocoral
    - Octocoral and Coral
    - Coral, Fire Coral and >25% Macroalgae
    - Zooanthidean
  - Aggregate
    - Dark, Upper, Coral and Octocoral
    - Upper Coral and Octocoral
    - Deeper Coral and Octocoral
    - Macroalgae Dominated (>25%)
    - Coralline Algae Reef ; Coral / Octocoral
- Unconsolidated Sediment :**
- Reef Rubble
  - Sandy Beach
  - Sand Waves
  - Compacted Mud
  - Mud ; Seagrass
  - Incised Gully
  - Sand over Upper Reef Slope
  - Sand over Lower Reef Plateau
  - Sand over Lower Reef Slope
  - Sand / Mud ; Macroalgae / Seagrass
  - Sand ; Dense Seagrass

